

DRIVER

Job description

It will take a society to beat dementia. Alzheimer's Society.



Who we are

Dementia is the UK's biggest killer. One in three people born in the UK today will develop dementia in their lifetime.

At Alzheimer's Society, we're the UK's leading dementia charity and the only one to tackle all aspects of dementia by giving help and hope to people living with dementia today and in the future. We give vital support to people facing the most frightening times of their lives, while also funding groundbreaking research and campaigning to make dementia the priority it should be.

Together with our supporters, we're working towards a world where dementia no longer devastates lives.

Our values

Our values tell everyone who we are as an organisation.

Our values make sure that our focus is clear for the challenges and opportunities ahead and remind us of what we all stand for.

Our values are evident in everything we do, how we do it and how we work together.

These are not just words on a wall, we live these every day in all our work. We are determined to make a difference when and where it matters most, by being passionate, focussed and making a lasting impact for people affected by dementia.



Determined to make a difference

We're passionate, we're focused and we make a lasting impact for everyone living with dementia.



Trusted expert

We're listening, we're learning and we use experience and evidence.



Better together

We're open, we combine our strengths and we achieve more together.



Compassionate

We're kind, we're honest and we don't shy away from challenges.

Through our values we will make the greatest difference for people affected by dementia. Whether you are someone living with dementia, a family member or carer, a supporter, a donor, a colleague from another organisation, an employee or a volunteer, these four values will shape your experience with Alzheimer's Society.

Driver

Position in the organisation

Reports to Day Support Manager

Purpose of this role

At Alzheimer's Society we are advisors, supporters, fundraisers, researchers, influencers, communicators, technical specialist and so much more. We are volunteers, we are employees, and together we are here to make a difference to the lives of people with dementia and their carers.

You will be part of our small drivers' team, providing transport to and from the day centre in Hammersmith. Collecting our clients in the morning and taking them home in the afternoon.

We are looking for someone who exemplifies our values, someone who is: Determined to make a difference when and where it matters most. A trusted expert who believes in working Better together and demonstrates true Compassion.

Key accountabilities and responsibilities

- *Contribute to the high quality support and activities we deliver to our clients on a day-to-day basis.*
- *Ensure that Health and Safety requirements are fulfilled.*
- *To work with the designated Passenger Assistant to ensure all clients are safe and comfortable on board the vehicle.*
- *To assist clients safely on/off the transport.*
- *To operate the tail lift according to instructions.*
- *To maintain the vehicle and report any defects or damage.*

We are looking for someone who can...

- Adhere to all the Society's service standards, policies and procedures.
- Comply with the data protection regulations, ensuring that information on clients remains confidential.
- Be responsible for personal learning and development, to support the learning and development of others and the whole organisation.
- Work in a manner that facilitates inclusion, particularly of people with dementia.
- Implement the Society's health and safety policy and procedures, ensuring that all practices and procedures are undertaken in accordance with a healthy and safe working environment and that all staff and volunteers for whom you may be responsible are aware of their responsibilities in respect of their role, monitoring data and recommending action as required.
- Administrate and organise own work to ensure that it is accurate and meets quality targets, reasonable deadlines, and reporting requirements.

- Follow the Society's management information guidelines and requirements, including ensuring appropriate monthly measures on service usage levels are collected and submitted on the services database or other systems in accordance with deadlines.

Person specification and selection criteria

Skills & knowledge	Application (A) or Interview (I)
Personal experience in a care environment	I
A basic understanding of dementia	I
An understanding of the needs of people living with dementia and their carers	I
Good listening skills/ empathy	A
Knowledge of relevant legislation including Health and Safety and the Mental Capacity Act	A
A good knowledge of the area (London borough Hammersmith and Fulham)	I
Non-judgemental communication	I
Full, clean UK driving Licence	A
To have or be willing to complete MIDAS drivers training	A

Competencies & personal attributes	Application (A) or interview (I)
Be a team player, supporting colleagues when there are deadlines, and who knows when to ask for help themselves.	A
Be a self-starter and incredibly motivated.	I
Excellent organisational and timekeeping skills.	I
Excellent attention to detail.	A
Non-judgemental communication	I
Commitment to and understanding of equal opportunities	A
Understanding of the inclusion agenda and its relevance within a diverse society	I

Follow us on Twitter and Instagram @Alzheimerssoc and Like us on Facebook or check out Alzheimer's Society YouTube channel youtube.com/AlzheimersSociety

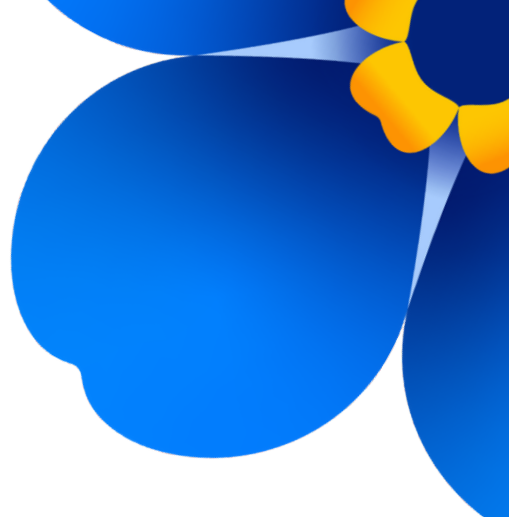
Criminal Record Check

This post may be subject to a satisfactory Criminal Records Check, from either the Disclosure and Barring Service (England & Wales), Disclosure Scotland Check (Scotland) or AccessNI (Northern Ireland). Please select the level of Check required for this role:

- Basic
- Enhanced
- Not Applicable

Candidates - If you require further information regarding Criminal Records Check, then please contact: **careers@alzheimers.org.uk**

Hiring Managers - If you require further information regarding Criminal Records Check for this role, then please contact: **Employeesupport@alzheimers.org.uk**



Our benefits



Financial Security

- Group Personal Pension Plan with Scottish Widows – with up to 8% employer contributions rate
- Life Assurance Scheme – two times your annual salary
- Society Plus and Smart Spending App – giving you unbeatable savings at hundreds of retailers



Health & Wellbeing

- Health Cash Plan
- 24/7 Employee Assistance Programme including online and face to face cooselling
- Discounted gym membership with Society Plus
- Lived Experience Networks
- Mental health app and unlimited therapy



Personal Development

- Apprenticeships
- Leadership development programme
- Financial support towards relevant professional qualifications



Family & Dependants

- Enhanced family leave - 16 weeks paid for all parents
- Paid time off work for fertility treatments for both partners
- Paid carers leave
- Paid dependants leave
- Paid compassionate and bereavement leave
- Paid time off work to support those transitioning



Recognition

- Annual people awards
- Long service awards
- Thank you eCards
- Values Hero and Society Legend Awards



Work Life Balance

- Annual leave of 27 days increasing to 30, plus bank holidays
- Career breaks of up to 3 months
- Flexible working
- Wellbeing leave